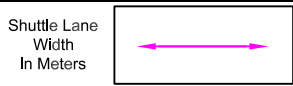
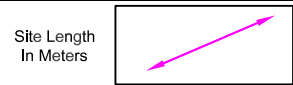


Speed Of Road
MPH



| | | |
|-----------------------|-------|-------|
| Traffic Light Phasing | 1 N/A | 2 N/A |
| | 3 N/A | 4 N/A |

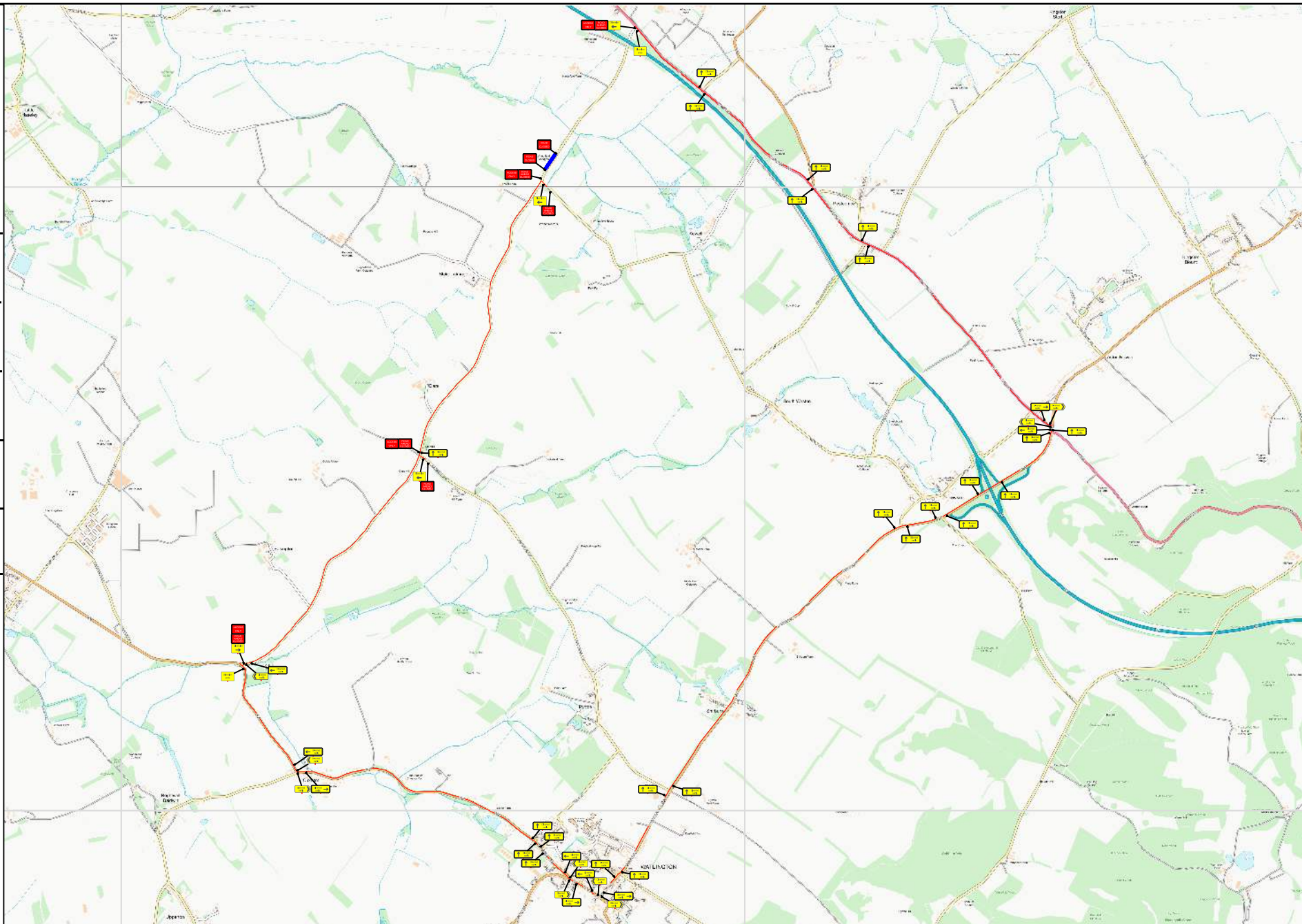


| | | |
|---------------|-------|-------|
| All Red Times | 1 N/A | 2 N/A |
| | 3 N/A | 4 N/A |

Traffic Management

Drawing Notes

SAFETY ZONE DIMENSIONS (S)
 Permanent speed limit 30mph or less
 Sideways safety zone 0.5m
 Longways safety zone 0.5m
 (Dimensions are minima)



Client



All Works Shall Be Carried Out In Accordance With The Safety At Streetworks And Code Of Practise 2013

KEY

- Traffic sign
- Traffic cone
- Traffic signals to Diagram 3000.1
- Working Space
- Pedestrian Barrier

Stoke Talmage Road,
Wheatfield, Thame,
OX9 7EP

Drawing No
PTM/INST/0926

Original drawing size A4 - NTS

Drawn By Date