

ASTON ROWANT, KINGSTON BLOUNT & CROWELL

# PARISH NOTES



THANK YOU TO ALL OUR ADVERTISERS  
PLEASE SUPPORT THEM ALL

# Festive Dining

Our delicious festive themed menu will be served in our Kite Restaurant for you to enjoy throughout the festive period.

Expect a warm welcome, beautiful surroundings and a meal to remember.

## THROUGHOUT DECEMBER\*

2 courses | £25.00 per adult, £12.50 per child, Under 3's eat free

3 courses | £30.95 per adult, £15.50 per child, Under 3's eat free

Lunch is served from 12pm until 4pm | Dinner served from 6pm – 9.30pm

Available from 17<sup>th</sup> November to 24<sup>th</sup> December

### STARTER

**Winter Vegetable Lentil Broth** served with crusty bread roll and butter (v, vg)

**Duck & Orange Pate** served with fruit relish and brown toast

**Breaded Camembert** served with cranberry relish (v)

### MAIN COURSE

**Traditional Roast Turkey Slices**

served with buttered vegetables, herb roast potatoes, pigs in blanket, sage, gravy

**Slow Cooked Beef Brisket**

served with mashed potatoes, vegetables, caramelised onion jus

**Baked Supreme of Salmon**

served with dill potatoes, sautéed greens & shrimp veloute

**Grilled Butternut Squash Fondant** (v, vg)

served with bean tomato ragout

### DESSERT

**Warm Christmas Pudding** served with warm brandy sauce\*

**Blackberry & Apple Crumble** served with fresh creme anglaise

**Chocolate & Raspberry Torte** served with raspberry sorbet

Please advise of any dietary requirements at the time of booking and a deposit of £5 per person is required at the time of booking.

\*Vegan Options available

Reservations - 01844 351496  
events@mercurethame.com

# CONTENTS

KB Village Hall	4
Useful Phone Numbers	5
Parish Council & Local Contacts	6
Letter from John Howell MP	7
Local Church Contacts & Services	8
Crowell Church	9
Aston Rowant Parish Council Notes	10
ARPC Footpath and Amenities Group	12
Fiveways	14
Noticeboard	16
Christmas in the Parish	16
Duck Races	17
Used Postage Stamps	17
KB Playground Refurbishment Project Update	18
News from ARCC	21
Letter from the Headteacher	23
New Year Walk	25
Aston Rowant School House Educational Trust	27
District Councillors Communiqué	29
Pleck Wood	36

## Editor

Sally Brodermann  
350364  
sallyparishnotes@gmail.com

## Advertising

Julian Knight  
351315  
jknight652@aol.com

## Treasurer & Distribution

Peter Lambert  
352617  
peter.lambert123@btinternet.com

## Proofreading

Edward Meade-King

## Illustrations

©Sally Brodermann  
sallyparishnotes@gmail.com

With special thanks to  
our team of distributors,  
for their continuing  
hard work.

Information in this  
publication is, as far  
as we know, accurate.  
The Parish Notes  
however, cannot accept  
responsibility for the  
quality of the  
information, services  
or items provided by  
other people or  
organisations.



(Hillwerke Recreational Trust Reg Charity No. 279656)

### Charges for Hire – Effective 1st January 2022

For Residents of the Parish of Aston Rowant

Monday–Sunday & Bank Holidays

Main Hall (8am–midnight)	£14.00 per hour
Committee Room only	£8.50 per hour
Children's Parties (daytime)	£40.00 (3-4 hours)

For Non-Residents of the Parish of Aston Rowant

Monday–Sunday & Bank Holidays

Main Hall (8am–midnight)	£15.00 per hour
Committee Room only	£9.50 per hour
Children's Parties (daytime)	£50.00 (3-4 hours)

All weekend hire – Fri mid-day to Sun mid-day

Resident £500; Non Resident £620

All day hire – 8am to midnight

Resident £210; Non Resident £225

All evening hire – 5pm to midnight

Resident £85; Non Resident £90

Bar Licence (if required) will incur an additional charge of £20

To make a booking, email [kbvhall@gmail.com](mailto:kbvhall@gmail.com)  
or visit our website [www.kbv.org](http://www.kbv.org) where you will also find a full  
description of the facilities we can offer plus details of activities  
currently taking place in the hall.





## USEFUL PHONE NUMBERS

CAB Local office <a href="http://www.adviceguide.org.uk">www.adviceguide.org.uk</a>	01844 214827
Chinnor Village Centre	01844 353733
Church Tower, Aston Rowant: R Newton	01844 352926
Dial-a-ride (for people with mobility problems)	01869 327048
Highways Pothole Hotline	0845 3101111
Highways Street Light Hotline	0800 317802
Library-Chinnor	01844 351721
Oil Syndicate <a href="mailto:adam.bernstein@mac.com">adam.bernstein@mac.com</a> .	01844 350440
Oxon County Council <a href="http://www.oxfordshire.gov.uk">www.oxfordshire.gov.uk</a>	01865 792422
Police-Thame (Thames Valley)	101 or 999
Poor's Hillock Allotments: Francesca Musaeus <a href="mailto:francesca.musaeus@hotmail.com">francesca.musaeus@hotmail.com</a>	
Porch: S Thompson	01844 351334
Porch: J Rooksby	01844 352320
Post office-Chinnor	01844 351214
Schools:	
Aston Rowant C of E School	01844 351671
Icknield Community College Watlington	01491 612691
Lord Williams School Thame	01844 210510
Mill Lane School Chinnor	01844 352106
St Andrew's C of E, Chinnor	01844 351353
SODC Main Customer Services	01235 422422
SODC Refuse/Recycling	03000 610610
SODC Planning	01235 422600
Reporting Fly-tipping	03000 610610
SODC Environmental Department	01235 422403
Chinnor u3a [Chair]	07711 337243
Village Hall Hire/Bookings: Andrea Tinson	07470 441857

## PARISH NOTES

Please get in touch if you have anything you think we could feature in future issues of the Parish Notes: If you have a new neighbour, or would like to announce any births, marriages or deaths. Maybe you have an interesting story about the area or someone who lives in the area. It would also be great to feature photos and illustrations – I'm always looking for pictures to add to the pages! All ideas welcome.

If you have anything you'd like to see in the next issue please get in touch.

**Copy deadline for the February/March issue is 15th January.**

Email: [sallyparishnotes@gmail.com](mailto:sallyparishnotes@gmail.com)

# PARISH COUNCIL & LOCAL CONTACTS

## Parish Website

[www.astonrowantparishcouncil.gov.uk](http://www.astonrowantparishcouncil.gov.uk)

## Parish Clerk

Tracy Lambourne

[clerk@astonrowantparishcouncil.gov.uk](mailto:clerk@astonrowantparishcouncil.gov.uk)

01844 353989

## Parish Councillors:

Chairman Matthew Day

[matthew.day@astonrowantparishcouncil.gov.uk](mailto:matthew.day@astonrowantparishcouncil.gov.uk)

07940 752446

Vice Chairman Adam Bernstein

[adam.bernstein@astonrowantparishcouncil.gov.uk](mailto:adam.bernstein@astonrowantparishcouncil.gov.uk)

07785 905120

Councillor Helen Birks

[helen.birks@astonrowantparishcouncil.gov.uk](mailto:helen.birks@astonrowantparishcouncil.gov.uk)

07921 840360

Councillor Deborah Chaplin

[deborah.chaplin@astonrowantparishcouncil.gov.uk](mailto:deborah.chaplin@astonrowantparishcouncil.gov.uk)

01844 354648

Councillor Jason Clark-Hodgson

[jason.clark-hodgson@astonrowantparishcouncil.gov.uk](mailto:jason.clark-hodgson@astonrowantparishcouncil.gov.uk)

07901 790749

Councillor Trelawney Hill, Aston Rowant

[trelawney.hill@astonrowantparishcouncil.gov.uk](mailto:trelawney.hill@astonrowantparishcouncil.gov.uk)

01844 353051

Councillor Joanne Hunt

[joanne.hunt@astonrowantparishcouncil.gov.uk](mailto:joanne.hunt@astonrowantparishcouncil.gov.uk)

07825 789251

## District Councillors:

Ali Gordon-Creed

[ali.gordon-creed@southoxon.gov.uk](mailto:ali.gordon-creed@southoxon.gov.uk)

Ed Sadler

07842 602398

[ed.sadler@southoxon.gov.uk](mailto:ed.sadler@southoxon.gov.uk)

## County Councillor

Kate Gregory

[kate.gregory@oxfordshire.gov.uk](mailto:kate.gregory@oxfordshire.gov.uk)

Nigel Champken-Woods

[nigel.champken-woods@oxfordshire.gov.uk](mailto:nigel.champken-woods@oxfordshire.gov.uk)

## MP

John Howell

01491 612852

[howelljm@parliament.uk](mailto:howelljm@parliament.uk)

## Police Community Support Office

tel: 101

[ThameHPT@thamesvalley.pnn.police.uk](mailto:ThameHPT@thamesvalley.pnn.police.uk)

## Village Hall Hire/Bookings

Andrea Tinson

07391 139707

[bookings@kbvh.org](mailto:bookings@kbvh.org)

## Play Area

Tracy Lambourne

01844 353989

[clerk@astonrowantparishcouncil.gov.uk](mailto:clerk@astonrowantparishcouncil.gov.uk)

## Aston Rowant Cricket Club Chairman

Josh Smith

07894 201 929

[chairman@astonrowantcc.com](mailto:chairman@astonrowantcc.com)

## LETTER FROM JOHN HOWELL MP

The State Opening of Parliament marks the formal start of the parliamentary year and the Monarch's Speech sets out the government's agenda for the coming session. On 7th November the new session of Parliament was opened with a historic King's Speech. It was the first King's Speech for 70 years. The detail of the speech has been well covered in the media and there will be differing views on the Bills to be brought forward. In the Prime Minister's introduction to the King's Speech I was personally pleased to note mention of the Holocaust Memorial Bill which will progress the construction of a national Holocaust Memorial and Learning Centre in London. I have been a Trustee of the Holocaust Memorial Day Trust for some time. The centre will provide a focal point for national remembrance and help to promote learning the lessons of the past. As Leader of the UK Delegation to the Parliamentary Assembly of the Council of Europe I was also pleased to see the Prime Minister draw attention to the fact that he has ensured that illegal migration has been on the agenda of every international meeting that he has attended from the G7 to the Council of Europe. His attendance at the 4th Summit of the Council of Europe which was held in Reykjavik in May was very welcome.

Now to a much more local issue which is regularly raised with me, that of Royal Mail deliveries. In some specific post code areas across the constituency mail is not being delivered on a regular basis and indeed at times people have not received post for over a week. I have challenged Royal Mail on this on a number of occasions and in September met with senior staff to pursue matters further. A number of issues were explained as I set this out on my website at the time. In a recent follow up meeting I was advised that there have been some changes in senior personnel with someone specifically brought in to oversee improvements to delivery in this area. Where there are delivery problems in specific post codes Royal Mail has promised a local investigation if given the post code detail. Staff shortages remain and if anyone is interested do look online on the Royal Mail website where vacancies are advertised. It was also interesting to learn that some of the delays are with distribution via third party carriers before mail gets to Royal Mail itself for delivery. With sight of the envelope the team at Royal Mail can use the codes to track the precise journey of a letter to see where they delays are coming from. It was interesting to learn that organisations such as the NHS use these carriers which may explain why some important letters offering appointments are delayed. The situation will remain under review with Royal Mail.

If there is a particular issue that concerns you, please do share your thoughts. If you would like to know more about my work please do look at my website. The address is [www.johnhowell.org.uk](http://www.johnhowell.org.uk). My contact details are also on the website

**John Howell MP**

# LOCAL CHURCH CONTACTS

## Rector to the United Parish

The Rev'd Dr. Jacky Barr  
The Rectory, Chinnor OX39 4DH  
01844 352027 07769 825 305  
revd.jackybarr@gmail.com

## Parish Administrator

Tricia Prescott csarc@btinternet.com  
Chinnor Church Office, OX39 4PG 01844 352472

## Associate Clergy:

### Aston Rowant

The Rev'd Des Foote 01844 355945  
The Rev'd Dr. Brian Griffiths 01844 355953

### Crowell

To be appointed

## Churchwardens

Aston Rowant: Richard Boarder 07795 681263  
Crowell: Maggie & Andy Warman 01844 351909

For arrangements for Baptism, Confirmation and Marriage please contact the Parish Administrator (see above).

Methodist Services – Station Road, Chinnor



# CROWELL CHURCH

Services on 2nd and 4th Sundays are still attended with reduced numbers which is now a trend and is of concern. Soul Space on 3rd Sunday has a small but loyal following.

Please note that all Crowell regular services are now at 16:00hrs for the winter months.

Details of all services across the Parish can be found in the Parish Magazine, on the Parish website and on the Crowell church notice board. Do look out for the Christmas services. There is bound to be one for you. A couple to note are: Crowell carol service on Thursday 21st December at 19:00hrs and a United Parish service at Crowell on Sunday 31st December at 10:30hrs

There was a Harvest 'bring and share' supper service at the end of September and a Remembrance service in November.

We've had no weddings or baptisms but sadly two funerals in the last couple of months: Margaret Lockwood who has had a connection to Crowell for most of her 96 years and Brian Hutton who was a previous Warden and researched the history of the church.

Work parties are now paused until March. We thank, very sincerely, those who do volunteer to help in whatever capacity and when they can.

Work in the graveyard, the carpark and the garden will continue when we can over the winter. The priority will be strimming the wild areas and planning smaller but better controlled areas for next year.

It is very pleasing to see more and more families looking after graves and this helps us to identify those areas to keep tidy.

Some minor works are urgent so tenders and costings are under way. Three suitable firms have been identified for repairs to the damaged window. The outline plan for toilet and kitchenette facilities is yet to progress to feasibility and costing.

We are looking into why the church is named St Mary's and Nativity of the Blessed Virgin Mary in various places and times. So far, it was St Mary's according to 1919 maps.

We are also attempting to reinstate the graveyard plan as the original working copy has been lost at St Andrew's

The church will always be open when the Wardens are working in it or working in the churchyard. Please call if you would like access for private prayer at other times.

Copies of the United Parish Magazine are available in the church porch and inside the church. If anyone would like an e-copy of the monthly United Parish Magazine and/or the weekly on-line service booklet then please e-mail the parish office at [csarc@btinternet.com](mailto:csarc@btinternet.com)

We wish all readers a very happy, restful and stress free Christmas. Please try and join us at some time over the joyful period.

**Andy & Maggs Warman**

(Church Wardens) 01844 351909 [themwarmans@btinternet.com](mailto:themwarmans@btinternet.com)

# ASTON ROWANT PARISH COUNCIL NOTES

Parish Council meetings were held on Wednesday 11th of October and Wednesday 8th November where the planning applications detailed below were discussed. The next meeting of the Council will be held on Wednesday 13th of December

## PLANNING APPLICATIONS:

**P23/S3257/DIS INFO ONLY** - Discharge of conditions 4 (Tree Protection) and 7 (Construction Environmental Management Plan) on planning application P23/S0321/FUL (Change of use of land from woodland to residential garden. Erection of home gym and golf practice room on the site of existing partially completed structure with concrete slab and foundations) at Warren Farm, Aston Hill

**P23/S3384/DIS INFO ONLY** - Discharge of conditions 4 (Tree and shrub protection measures), 5 (Root protection details), 6 (Foul and Surface water drainage works), 10 (Schedule of Materials including flint bedding) & 13 (Landscaping (incl access road and hard standings) on planning application P23/S0337/S73 Variation of condition 2 (approved plans) on application P20/S1180/FUL-internal and external changes.(as amended by plan received 22 March 2023, incorporating flint panels and alteration to roof to reposition dormer windows above the eaves). (The erection of a single dwelling with access derived from the existing drive, and 2 parking spaces will be provided, together with a turning area, to enable vehicles to leave the site in forward gear) granted at appeal APP/Q3115/W/20/3263533 to improve the internal layout and external fenestration at: Aston Cottage, 18 Church La, Aston Rowant.

**P23/S3257/DIS** Amendment No 1 on application P23/S3257/DIS, for development work at the following location: Warren Farm Aston Hill near Aston Rowant for: amended Ecology information received 17 October 2023. **NO OBJECTION.**

**P23/S2916/FUL** Amendment No. 1 on application P23/S2916/FUL for development work at the following location: Aston Rowant Cricket Club, Chinnor Road, Kingston Blount as amended by plans received 01 Nov 2023. **NO OBJECTION.**

## WITHDRAWN APPLICATIONS:

None

## PLANNING DECISIONS OF SODC:

**P23/S2384/O** NOT IN THIS PARISH but We objected in view of massive impact on rural/conservation area. Development of 120,000sqm of Use Class E employment floorspace comprising Research and Development units, Light Industrial units, ancillary offices, ancillary amenity buildings (up to 2,400sqm), Creche (up to 600sqm), Forest School (up to 150sqm), along with new site accesses, internal roads and footpaths, surface and multi- storey car parking, open space, landscaping, biodiversity enhancements, drainage features and other engineering operations, infrastructure and associated works at Land east of Junction 8a, M40 Waterstock OX33 1HT (Waterstock village & Golf Course). **REFUSED**

## PLANNING DECISIONS MADE SINCE THE LAST MEETING:

None

## PLANNING INSPECTORATE APPEAL:

None

Please note that all Planning Applications for the Parish can be found on the Parish Council Website: <http://www.astonrowantparishcouncil.gov.uk> under 'Parish Council' and then 'Planning'.

All past minutes of Aston Rowant Parish Council (Including the Annual Parish Meeting) can be found under: <http://www.astonrowantparishcouncil.gov.uk> under 'Parish Council' and then 'Meetings'.

Occasional updates concerning the Parish are added to the Parish Council's website and Facebook pages as well as the Kingston Blount/Aston Rowant (KBAR) Facebook page.

**Tracy Lambourne**

Clerk to Aston Rowant Parish Council

**THE  
COUNTRY  
WORKSHOP**



*Sam Hunt*

**CARPENTER • JOINER • CABINET MAKER  
WINDOWS • DOORS • BESPOKE WORK**

**ASTON WOODWARE**

**TABLES • GARDEN FURNITURE**

Aston Hill (A40), Nr Lewknor, Oxfordshire. OX49 5SG  
Tel: 01844 351500 Mob: 07872 066 379

## ARPC FOOTPATH AND AMENITIES GROUP

Firstly, Season's greetings to all, let's hope for some bright crisp winter mornings as opposed to the seemingly non-stop wind and rain of the autumn.

Can I thank everyone who joined in the autumn litter pick— almost 40 bags of litter were picked up on Kingston Hill and the B4009 and A40 in Aston Rowant. I would like also to thank the cyclists who reported me to SODC for what they saw as fly tipping. I quickly explained to SODC who I was and what we were doing but it does show that if you see someone fly tipping and report them, in my case by the car registration, that SODC will take action.

It has been a busy time for the group and some long-standing jobs have been completed. In addition to the daffodils which were mentioned in the last notes snowflakes (large snowdrops) have been planted in Pleck Wood – these should brighten up the wood in the spring.

The Jubilee Plaque at Fiveways is now in place – additionally a temporary repair has been funded by the Parish Council and we have a proposal and quote to replace the bridge in the spring. The fence on the permissive path to Crowell has been repaired, more work is required to level the damage caused by the water main burst, but this will have to wait until spring, as will the repair to the Moor's Path both at the Stert Road entrance and also by Aston Rowant Green as it is simply too wet to resurface the existing path.

Looking forward, please see the details of the Parish Walk in Peter Hetherington's notes and can I remind everyone about the Duck Race on the 18th of Feb.

In 2024 water quality is becoming more and more important, both locally and nationally. We have all read about the terrible situations with waste being pumped directly into rivers, but we should all recognise the importance of water in the parish. Anything that goes into our streams ends up in the River Thames, so we need to look after these streams. The recent flooding of Church Lane in Aston Rowant is an example of what can happen in the parish – a pipe was blocked preventing the Woodway Winterborne Stream to flow down to Fiveways, the resultant flood caused damage which can still be seen as I write these notes.

Mike Eaton in his notes refers to the River Thame Catchment Partnership – whilst it is a bit of a mouthful, it is set up to monitor the quality of water coming out of the Chilterns and into the Thames. We will all hear more about this in the next few months, but one recommendation from the group is that a measure to protect the streams is to name them rather than just calling them streams. We proposed last year the following:

Woodway Winterbourne. From Woodway Farm to Church Lane.

Holbrook. From Aston Lake to Fiveways and onwards

Stad Way Brook. From Stad way to Holbrook.

Aston Ford Brook. From AR Primary School to Holbrook

Kingston Brook from Kingston Hill via Brook Street to Ford on the Lower Icknield Way and beyond.



Sewells or Crowell Brook. From Crowell via Lower Icknield Way to Kingston Stert and beyond.

Unless anyone has different names, we are recommending that these names are adopted. It is our intention to then produce a series of Maps showing these streams in detail – hopefully this wider understanding of the streams and the consequences of pollution in all its forms will help us to protect these important streams.

### Steven Sowerby

Chair of Footpaths and Amenities Group

stevensowerby@hotmail.com

01844 351392

## THE FOOT SANCTUARY

DEVOTED TO PROVIDING THE BEST HEALTHCARE FOR YOUR FEET



Medical Pedicure using  
Neal's Yard Products  
Podiatry - Chiropody  
Paraffin Wax Treatment  
Cryosurgery  
Reflexology  
Reiki with crystals

58 London Road  
Milton Common  
OX9 2JL  
01844 278606  
07941 035849

SUE YEOWART HCPC 26216 REG. PODIATRIST CHIROPODIST  
REFLEXOLOGIST ~ REIKI MASTER ~ INTUITIVE HEALER

## FIVEWAYS

Well here we are, nearly at the end of another year - so a festive special! Since I last wrote the Jubilee Mulberry has gained a plaque in memory of the late Queen's Jubilee. It has done well this year with low temperatures and a dry summer but it has had a watering team in place. It was grown from seeds collected from Shakespeare's garden in Stratford by yours truly. They are extremely hard to raise.

It has become increasingly hard to plant large trees. The two oaks planted in the hedge between Pleck Wood and the Icknield way have been replaced but only one has perhaps survived. However there is a seedling oak at Fiveways which has been spotted and which we will protect (see photo). It is a bit hemmed in but deserves a chance for such a great tree.

The new introductions this year are repeat tries with yellow Monkey Musk – a water loving plant and Vipers Bugloss, a local native biennial, but I have never seen one in the wild around here. The Monkey Musk likes soft wet soil – not too dry or too wet. It drops a lot of seed and is fast growing. The Bugloss being biennial is a bit more of a problem – it is just a case of keeping trying. There are about ten on the site. There are dozens of Monkey Musk! Watch out for them.

Black poplars are a rare tree in Britain, but Oxfordshire has most and we now have two, after one was cut down by the electricity board. The lower one we hope to clear round, as it has a large number of seven year old wild daffodil seedlings. These can be deployed on the site or elsewhere. Daffodils have been planted in Pleck Wood so look out for these as well.

There are still fish (Sticklebacks/Bullheads) in the Holbrook but they all dropped down stream below the dog pool during the dry weather. The water is deeper and

there is cover. Do not enter the stream below the dog Pool as it is very soft and you are likely to get stuck. There are fish refuges along there and I hope they are being used. The stream bed is graded – at the top of Fiveways there are pebbles and at the bottom fine silt.

The walkway has been repaired and a longer term solution is probably called for. I have never been able to see why a ditch was dug under the walkway. – it does not function as a drain these days.

Some months back I attended the River Thames Catchment Partnership Water Conference in Risborough. I was very impressed by the number of people attending (ca 100) and the extent and quality of the work being done in the



river Thame catchment. Of particular interest is the value of Apps, which encourage volunteers and also their use as educational tools for school children.

The presentation slides from the conference can be seen here: <https://drive.google.com/drive/folders/1f8R4oSrvwnHwQJcLsqciIlo3IYeCYhwP?usp=sharing>

I would recommend attendance for anyone with an interest in the local environment. There was discussion about the Risborough stream which is one of the best in the area but polluted by sewage.

I have been told that otters are clearing out the signal crayfish in the Lewknor Brook, so maybe the crayfish bodies found in Church Lane are otter leftovers. Unfortunately they also eat the much rarer brown trout at Lewknor.

At the time of writing, the Winterbourne near Woodway Farm down to the village is running very well. This indicates that its reservoir in the Chilterns is now full. It has not run for some time and was blocked at first by debris until it burst through. This shows the ground cannot absorb any more water and the stream will run again if there is heavy rain – with even the potential for flooding. The Winterborne in Church Lane flowed over as it seems blocked near the Church. It ran down Church Lane until the grips lower down put it back on course. Unfortunately some of the flow in Church Lane went down into Thames Waters sewers. It is really important that the ditches are kept clear of debris as some stretches are underground and hard to clear if blocked.



**Mike Eaton**

[mike.eaton@btopenworld.com](mailto:mike.eaton@btopenworld.com)

# NOTICEBOARD

## WHAT'S GOING ON IN KINGSTON BLOUNT, ASTON ROWANT & NEARBY



### Advent Lunch

At Aston Rowant Church  
on Tuesday 5th December  
12.30 – 2.30pm

Lunch will be provided  
(Jacket potatoes, fillings, side salad.)

---

## Christmas 2023 in the United Parish

**Saturday 2nd Dec** Sydenham Christmas Fayre

**Saturday 2nd Dec - Sun 10th Dec:** St Andrew's Christmas Tree Festival

**Saturday 16th Dec:** Silver Band Concert @ St Andrew's

**Sunday 17th Dec** Nine Lessons and Carol services:

3pm Aston Rowant church

4pm Sydenham church

6pm St Andrew's, Chinnor

**Thursday 21st Dec:** Carols and Readings 7pm BVM, Crowell

**Sunday 24th Dec:** Morning service 10.30am, St Andrew's, Chinnor

**Sunday 24th Dec:** Crib Services

4pm, Aston Rowant

4pm, Sydenham

5pm, St Andrew's Chinnor

**Sunday 24th Dec:** Midnight Mass

11pm St Andrew's, Chinnor

11.30pm St Mary's, Sydenham

**Christmas Day,** Holy Communion

10.30am St. Andrew's Chinnor

10.30am Aston Rowant



## Used postage stamps

People are using fewer stamps due to cost and it is therefore more important than ever to save what we can. For anyone new to the Parish, I collect used stamps and take them to the Sobell Shop near Waitrose in Thame. The volunteers there are very grateful for them as they raise funds with just a little effort and at no cost to us. As before they can be left in a tin box just inside Aston Rowant Church or popped through my letterbox at Meadow Vale, Pleck Lane. The bungalow behind the picket fence.

**Shirley Smith**

On behalf of Sobell House

---

## DUCK RACES • SNOWDROP WALK • CREAM TEAS



Sunday 18th February 2024 2-4pm

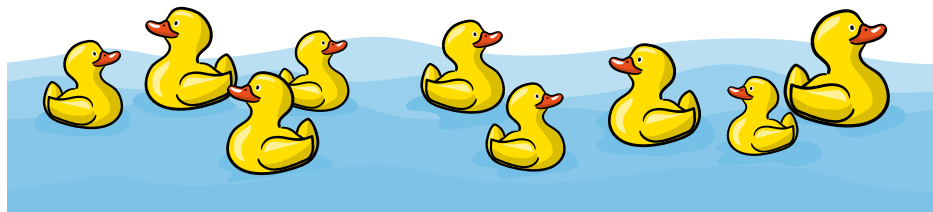
Aston Rowant

Duck Races on the Holbrook stream

Cream Teas served in Aston Rowant Church

Please wear boots/wellies!

Organised jointly by Aston Rowant Parish Council and the church



Friends of St Andrew's Church  
Chinnor



## Pantomimes and Musicals

**2 - 10 DECEMBER 2023**

**OPEN 2 – 5 PM EACH DAY**

**With Christmas Refreshments**

**Lucky Draw for Christmas Hamper**

Donation at the Door : £2

All funds raised go towards care and maintenance of  
St. Andrew's Church

<https://chinnorunitedchurches.co.uk>

# KINGSTON BLOUNT PLAYGROUND REFURBISHMENT: PROJECT UPDATE

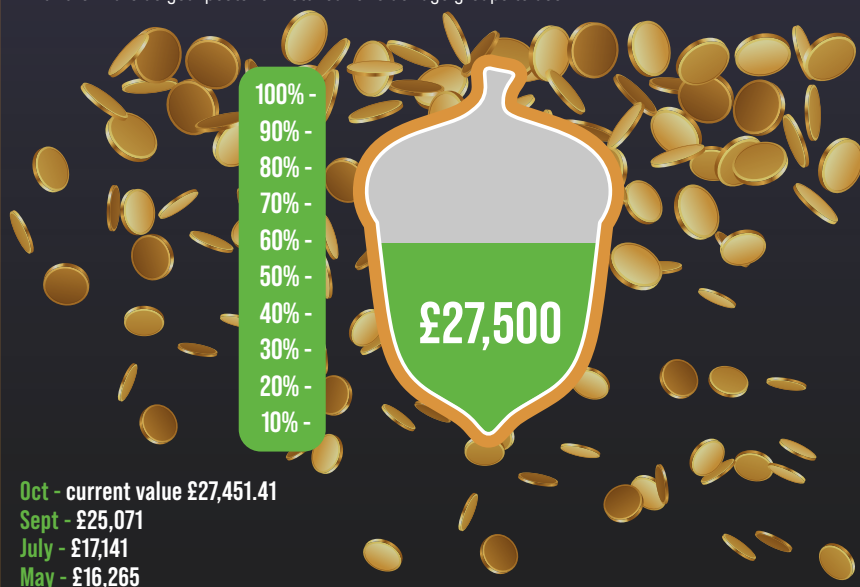
Dear community,

As of the end of October, after only eight months of fundraising, we are pleased to announce that we have raised **£27,500** for this vital community asset.

As part of our fundraising activities we have been busy delivering regular coffee mornings and held two fantastic quiz nights in the village hall. We have received some generous donations from members of the community and have been applying for a number of grants. This has enabled us to replace the playground fencing to safety proof the area.

We are tremendously proud of our achievements to date but recognise there is still some way to go before we are able to fully deliver the refurbishment works – our target fundraising total remains **£50,000**.

Although the main focus of the project benefits young children, we will be broadening inclusivity and the age range who will use the playground through the inclusion of tailored play equipment. We are also keen to highlight that the whole community can benefit from the project as we will be installing a new outdoor seating area, located on the playing field next to the playground. The aim is to provide the community with a place to meet, enjoy the outdoors and engage with others. Additionally, the adult exercise equipment will be restored and we will be re-locating the 5-a-side football pitch closer to the playground, with the 11 a-side goal posts re-installed for older age groups to use.





**Our brand new park fence**



**The happy winning quiz night team**

We hope that the rejuvenation of the playground and playing field will support a wider community benefit, including increased village hall bookings and an increase in customers to local businesses – The Cherry Tree and Lockdown Larder. If you have not given a donation to date, we urge you to give what you can to support this community project by giving a **DONATION NOW**.

## PAYMENT METHODS PROVIDED BELOW

We really hope you would consider supporting this project by kindly giving a donation.

**By BACS:** The Kingston Blount Park Fundraising Committee. Sort Code: 60-10-28, Account Number: 17656966 (NATWEST)

**Online:** <https://www.justgiving.com/crowdfunding/kb-park> \*

**By Cheque:** Payable to 'Kingston Blount Park Fundraising Committee'. Please put it in an envelope marked for the KBPFCo and drop it round to Laura Purse at Chiltern Cottage, The Green, Kingston Blount. Or to discuss alternative options and Business Donations please contact the committee via the details provided below.

\*Please note donations made via the Justgiving page will incur a transaction fee. If you'd like the project to receive 100% of your money please choose one of the other donation methods provided.

As we still have just over £20,000 to raise we are always looking for **Business Donations**. If you own or know of a business that would like to have an impact on our community please contact the committee via the details provided below.

The KBPFCo  
The Kingston Blount Park Fundraising Committee

THANK YOU for your continued support!

**@KINGSTONBLOUNT PARK FUNDRAISING COMMITTEE**  
**KB PARK FUND@GMAIL.COM**



**PLAY · LEARN · GROW**





*Effective treatment for  
pain and injury*

Victoria Inglis-Smith BSc, MSc REGISTERED OSTEOPATH

**07717 722212**

[www.theluxtonclinic.co.uk](http://www.theluxtonclinic.co.uk)

- Back Pain
- Frozen Shoulder
- Headaches
- Hip Pain
- Knee Pain
- Migraine
- Muscle Strain
- Neck Pain
- Sciatica
- Sports Injuries
- Tendonitis
- Tennis Elbow
- Trapped Nerves

Appointments  
available  
Mon-Sat

Registered  
with all major  
health  
insurers

## Jones Garden Care

All aspects of gardening undertaken

- Leaf clearance
- Grass cutting – large & small lawns
- Strimming
- Hedge & shrub cutting
- Weeding & weed-killing
- General garden maintenance

Weekly, fortnightly or just a one-off visit.  
Lots of good local references.

**Call Curtis –  
07890 587872  
01494 482406**

## Generations

### FAMILY HAIRDRESSING

4A THAME ROAD  
CHINNOR  
TEL: 01844 352033

### FAMILY HAIR SALON



A Merry Christmas and a Happy New Year to all you readers.

For the Cricket Club Christmas came early, as on November 20th South Oxfordshire District Council gave planning approval to the pavilion on the bottom field. We would once again wish to thank everyone who contributed to the plan, the people who came to the open meeting as well as the ones who commented to SODC. Your support has, I'm sure, helped to have the plans approved. The revised plans are available on the SODC planning register P23/S2916/FUL and then 2023-11-01 Amended Plans.

This planning application is for the first phase of the longer-term project of replacing the main pavilion which will follow in the future, but this first step will bring great benefit to the junior teams in the club.

The timing of the publication means that these notes will be published before the club AGM on December 1st, but following the meeting we will be able to give more details on the build timetable and also how people can help us fund the project. Now we have planning permission we can start the process of applying for grants but we will still need all the help we can get.

On the field, one of the main aims of the club is to introduce a girls softball/ladies team. It seems an anomaly that whilst we have two young ladies playing professional cricket, who are both playing in the Australian T20 competition and another in the Oxfordshire development pathway we do not have a girls/ladies team. If you have a daughter who wishes to play or would like to get involved in the running of this section, please contact us through the club website [astonrowantcc.com](http://astonrowantcc.com).

In other news, we are pleased that Ben Le Bas will return next season for a third season as our overseas player. Not only is he a very good asset on the field he is a very popular member of our coaching set up, especially with the juniors.

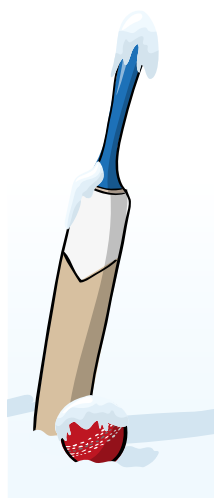
James Cole's career continues to flourish. After finishing last season with some significant scores he is currently overseas with the England Lions (effectively England's second team) at a training camp in the UAE. We follow his progress with keen interest.

Finally can I repeat what is said every year, whilst we are always looking at new players and not just the first team, we are also looking for both umpires and scorers. Training for both these roles is available and both roles are paid. From personal experience I can say that other than playing, umpiring gives the best cricket experience. I can recommend it to any ex-players who are missing the game.

**Steven Sowerby**

Aston Rowant CC

[www.astonrowantcc.com](http://www.astonrowantcc.com)



## MARK LORD, LOCAL PHOTOGRAPHER

Many of you may have met Mark during his doorstep project in 2020 when he photographed the residents of Kingston Blount & Aston Rowant to mark 75 years since VE Day. In all Mark photographed 75 households on their doorsteps during lockdown 1 & last Summer. The images will be on display in the village hall soon. Mark has lived in Aston Rowant for almost ten years & is often seen out with his camera photographing his clients using our lovely local countryside as a backdrop. Book Mark to photograph your family & you will meet at his home in Aston Rowant before walking down towards Fiveways. A relaxed family shoot, the walk helps everyone unwind, interact & Mark will capture some beautiful images which your family will treasure for years to come. After the shoot you will receive a secure online gallery from which you can choose digital files, prints or he also has some stunning wall products to choose from. Portrait shoots from Mark's home are £25, or a shoot can be arranged at your family home if you prefer.

Please contact Mark for more information.

[info@marklordphotography.co.uk](mailto:info@marklordphotography.co.uk)

01844 351218



**LOCAL PHOTOGRAPHER MARK  
SPECIALISES IN PEOPLE  
PICTURES, HIS PASSION IS  
MEETING PEOPLE AND  
CAPTURING BEAUTIFUL,  
NATURAL PICTURES OF THEM**

WHY NOT TAKE A STROLL THIS SPRING IN THE  
COUNTRYSIDE AROUND ASTON ROWANT  
WHILST MARK CAPTURES YOUR FAMILY IN A  
FUN & RELAXED FAMILY SHOOT?

PORTRAIT SHOTS WITH LOCAL  
PHOTOGRAPHER MARK LORD FROM £25  
PLEASE ENQUIRE FOR MORE DETAILS  
QUOTING \*PARISH MAGAZINE\*

MARK IS AN ACCLAIMED WEDDING  
PHOTOGRAPHER, IF YOU ARE PLANNING A  
WEDDING IN 2021 OR 2022 PLEASE CONTACT  
MARK FOR MORE INFORMATION

[www.marklordphotography.co.uk](http://www.marklordphotography.co.uk)

01844 351218

## LETTER FROM THE HEADTEACHER

As I write our Reception children are busy rehearsing their nativity play, 'Shine Star Shine'. If you enter the EYFS classroom it is buzzing with children learning their lines and practising the songs with gusto! I know that other children, the staff and parents all look forward to watching the nativity and it is a highlight of the Christmas period in school.

The nativity play itself has long been a tradition in schools up and down the country. Based around the traditional story of the first Christmas, the nativity is first and foremost a way for children to understand the Christmas story in more detail, to step back over two thousand years and immerse themselves in a story about a king born in a humble stable. However, the joy of the nativity is that it is literally the gift that keeps on giving. Any school play, such as nativity, is a great method for children to learn a whole host of skills that can benefit them throughout their entire schooling as well as provide a firm foundation for years to come.

Imagination – performing in role requires the children to imagine what it is like to be that person and it also boosts their ability to empathise with somebody by acting as them.

Communication – acting enables children to improve their communication skills in a context that is fun and exciting and develops excellent interpersonal skills between the performers and the audience.

Confidence – Speaking in front of their peers and parents allows children to develop self-confidence and is great practice not only for later on in education but eventually the workplace too.

Teamwork – Any play can give children and adults the opportunity to work together in new and exciting ways as they learn their lines, choreograph where to stand on stage, design the set and work as a team to pull off a good performance.

As our children perform 'Shine Star Shine' this December they will be receiving vital personal development, and the confidence that children can gain out of being a part of a performance such as this can benefit them for life. The more interpersonal skills and self-confidence a child has, then the greater their growth and ability to shine as they progress through school and later life.

I personally can't wait to watch yet another great performance, I know it will make my Christmas.

Happy Christmas.



**Helen France**

Headteacher



Camp Industrial Estate  
Milton Common  
OX9 2NP  
M40, Junction 7  
Tel: 01844 278177  
Email: [workshop@rcpservices.co.uk](mailto:workshop@rcpservices.co.uk)

Present this voucher and choose from one of the following:

- £10 off of your MOT
- £10 off of Air Con Regas
- £10 off of Wheel Alignment
- Free loan vehicle
- Free vehicle health check

Servicing · Tyres · Brakes · Clutches · Alignment  
Suspension · MOT's · Air Con Regas ·  
Engine Diagnosis · Exhausts · Collect/Deliver



*The health of your eyes and the quality of your vision are our primary concern*

High Street, Chinnor 01844 351564 [www.ivancammack.com](http://www.ivancammack.com)

*Ivan R. Cammack*  
Optometrist

# ASTON ROWANT PARISH NEW YEAR WALK

## **‘It’s that time of year again!!**

Come and join our New Year Parish Ramble from Aston Rowant Mercure Lambert Hotel and blow away some of those seasonal excesses! As usual, this is a joint venture between Aston Rowant Parish Footpath and Amenities Group and Thame and Wheatley Ramblers.

The walk departs promptly at 10am on Sunday 7 January. It is 6.5 miles which takes in Lewknor, the Ridgeway, Bald Hill, Wormsley Estate and Aston Rowant Nature Reserve. There is one stile, some very good views, two hills and some mud. The pace is leisurely and no-one gets left behind. We will have an excellent back-marker.

Park in the road to the side of the hotel.

If some paths are closed because of tree work, we will modify the route but will still start at the Lambert and still visit the Nature Reserve. Some may wish to stop at the Leathern Bottle near the end but the walk will return to the Lambert.

I reckon it is at least 40 years since we started these New Year Walks. So please come and join us. There is no charge and no need to book.

Merry Christmas.

**Peter Hetherington**

07767 647714



**Bespoke Curtains, Blinds & Soft Furnishings**

Hand finished, made to measure, installed

**Light control, sun filtering and insulation**



Fabric ~ Wallpaper ~ Re-Upholstery ~ Poles ~ Tracks ~ Motorisation

Curtain and blind alteration/repair also accepted following consultation



**Beautiful showroom in Thame**

Collections of fabrics, wallpapers and blinds to view

**Visitors welcome no appointment required**

55 North Street OX9 3BH 01844 220035

Visit [www.tillynilly.com](http://www.tillynilly.com) for current opening days & times

# VILLAGE ENVIRONMENTAL SERVICES DOMESTIC DRAIN SERVICES

Proprietor: Dennis Cook  
Est. 1979

**24/7  
CALLOUT  
SERVICE**

# BLOCKED DRAINS?

**CALL US  
DAY OR  
NIGHT**

**FAMILY RUN BUSINESS SINCE 1979**

**BLOCKED DRAINS CLEARED • REASONABLE RATES**

**NO EXTRA CHARGE FOR EVENING, WEEKEND  
OR BANK HOLIDAY CALLOUTS**

**CCTV DRAIN SURVEYS**

**FULL PUBLIC LIABILITY INSURANCE**



**07850 635 844**  
**01296 624 221 (MESSAGES)**





# ASTON ROWANT SCHOOL HOUSE EDUCATIONAL TRUST

The Charity was set up in 1992 with the sale proceeds of the School House which currently sits between the two parts of the school. The trust deed states that the Trustees can give grants to the School and residents in the parish who are under 25. The other main consideration from the deed was the grants are for promoting education including social and physical training purposes. The grants normally take the form of a contribution to specific projects or items used.

The Trustees meet twice a year in May and November. Examples of grants this year are: help with the school IT equipment for pupils, help with an individual moving to college away from home, contribution for software needed for university studies, contribution to the cost of a work qualification course, help with the cost of the school residential week.

Some residents in the parish may either have children or are themselves eligible to obtain a grant. To be considered you need to apply in writing to the Trustees who will consider the applications.

For more details or to apply contact the administrator

## **Peter Lambert**

01844 352617 [peter.lambert123@btinternet.com](mailto:peter.lambert123@btinternet.com)

1 Old Croft Close, Kingston Blount

# HAMNETT HAYWARD



If you are looking for an established estate agent with a fresh approach,  
we believe Hamnett Hayward are the team to deliver.  
Our independent office promotes an individually tailored service combining  
modern Internet lead techniques with traditional values

42 Upper High Street  
Thame, Oxfordshire  
OX9 2DW

**01844 215371**  
[thame@hamnetthayward.co.uk](mailto:thame@hamnetthayward.co.uk)

## SAM SHEPHERD PLASTERING LTD



A friendly and reliable service  
that offers the very best in  
plastering craftsmanship

- \*High Quality Work
- \*Competitive Rates
- \*No Job Too Small

T: 01844 352710

M: 07989 368573

[E:sgshep17@gmail.com](mailto:E:sgshep17@gmail.com)

## Babysitting Service



Hi, my name is Alexa!  
I am 14, and an older sister who  
loves to take care of children.  
I have some babysitting experience,  
and I also help with junior dance at  
Thame Youth Theatre.  
I have completed a St Johns Ambulance  
safety course at Lord Williams, and also  
one for Duke of Edinburgh.

I am available in Thame, Chinnor and  
the surrounding villages - after school on  
Tuesday, Wednesday & Thursday  
or anytime at Weekends.

Tel: 07739 725273  
£6 per hour



## GRACE CARPENTRY & BUILDING



All aspects of carpentry and building work undertaken

A friendly, reliable and trustworthy service

Tel: 01494 482787 Mob: 07725 328 049

Email: [grace.gcb@outlook.com](mailto:grace.gcb@outlook.com)





Taking pride in caring for trees we  
provide all aspects of management and  
maintenance to give you the  
Complete Tree Service

OVER 40 YEARS EXPERIENCE

How can we help?

- ✓ QUOTING & ADVICE
- ✓ SURVEYING
- ✓ PRUNING OPERATIONS
- ✓ MANAGEMENT & PRESERVATION
- ✓ STUMP GRINDING
- ✓ PLANTING & NURTURING
- ✓ PLANNING & TPOS
- ✓ SITE CLEARANCE



**COMPLETETREESERVICES.CO.UK**

**01844 351 488** • [admin@completetreeservices.org.uk](mailto:admin@completetreeservices.org.uk)

**SERVING BUCKINGHAMSHIRE  
& SURROUNDING AREA**



## Keeping your Accounting & Bookkeeping affordable

**Are you paying too much for your accounting services?**  
We provide affordable, often fixed price packages with a prompt, personal service

**Call us now for a free, no obligation quote to see how we can save you money**

- Bookkeeping
- Self assessment
- Sole traders / partnerships
- Commercial services
- Limited companies
- Budgeting and forecasting
- Business start-up
- Outsourced finance director



**07939 030102 / 07929 018534**  
**info@cocoaccounting.biz | www.cocoaccounting.biz**

Based locally in Kingston Blount, near Chinnor and serving all of the Chilterns area

## SURMAN & HORWOOD FUNERAL SERVICES

Golden Charter  
Funeral Plans



At Surman & Horwood Funeral Services & Monumental Masons we offer comprehensive funeral services from a family run business with years of experience.

Chapel of Rest, The Green, Crowell  
01844 351323 (24 hours)





# MeadowView Aesthetics

Skin and Laser Specialist

**Offering a unique and personalised service, specialising in advanced skin treatments for dramatic results.**

*" With more than 20 years experience in the beauty industry and as the former Head of Clinical training for ABC Lasers, MeadowView Aesthetics is my chance to combine my love of laser therapies and good skin health through innovative skincare to help you achieve happiness and confidence in your skin.*

*My mission is to provide you with a warm, relaxed, and professional environment with results-driven skin treatments and excellent customer service."*

**Susan Forster**  
Owner

- ✿ Anti ageing treatments
- ✿ Advanced facials
- ✿ Rosacea treatment
- ✿ Acne scar revision
- ✿ Nail fungus
- ✿ Skin resurfacing
- ✿ Laser tattoo removal

**ADVANCED  
NUTRITION  
PROGRAMME**

**Alma  
Harmony XL PRO**

**nimue**  
SKIN TECHNOLOGY

**Contact me to arrange your free consultation**

[info@meadowviewaesthetics.co.uk](mailto:info@meadowviewaesthetics.co.uk)

**07979 652460**

[meadowviewaesthetics.co.uk](http://meadowviewaesthetics.co.uk)

MeadowView Aesthetics  
High Street  
Kingston Blount  
OX39 4SJ





# Michael's Tree Services



## Professional Arborist

All aspects of tree work undertaken including fencing.

All work done to British standard 3998.

Fully qualified £5 million public liability.

NPTC certified National certificate in Arboriculture  
and National diploma training.

Based in Kingston Blount.

Your job is our future so we take pride in our work.

For a free quote call Michael Hawkins today.

[michael@michaeltreeservices.co.uk](mailto:michael@michaeltreeservices.co.uk)

[www.michaeltreeservices.co.uk](http://www.michaeltreeservices.co.uk) Tel: 07765 123412



Registered  
Technician

Registration Number: 35905

# **MICK HOBDELL**

## Plumbing & Heating Engineer

Oil Boiler/Aga Services and Repairs

Power flushing (to remove build-up in central heating  
systems, increasing efficiency)

General Plumbing

Phone 07554 426113 or 01844 281521  
Tetsworth Nr Thame

# ARBOCARE TREE SURGERY LTD

Qualified and Experienced Arborists

- Established over 25 years
- Contractors to the National Trust
- Crown reductions
- Thinning
- Felling
- Hedge Trimming
- Stump Grinding
- Decay Detection & Tree Reports

Free phone: 0808 1555815

Mobile: 07778811136

[www.arbocare.co.uk](http://www.arbocare.co.uk)





Experienced Flooring Contractors for  
**QUALITY CARPETS**  
**TILES, VINYLs & WOOD FLOORING**

DOMESTIC & COMMERCIAL  
INSURANCE ESTIMATES  
ADAPTION & REPAIRS

Contact Airs House Carpets today for a professional  
supply and fitting service.

01844 342 546  
[sales@airshouse.co.uk](mailto:sales@airshouse.co.uk)  
[www.airshouseflooring.co.uk](http://www.airshouseflooring.co.uk)

Station Parade, 4 Summerleys Road, Princes Risborough



**ROWLANDSCAPES**

## **CREATIVE LANDSCAPE GARDENING**

- Patios & paths • Brickwork • Planting & hedging
- Fencing • Driveways • Wildflower meadows
- Lawns • Garden maintenance • Tree surgery
- Woodland management • Agricultural fencing

**Telephone:** 01844 351919 **Mobile:** 07718 257104

**Email:** [rowlandscapes@googlemail.com](mailto:rowlandscapes@googlemail.com) **Website:** [www.rowlandscapes.com](http://www.rowlandscapes.com)

# CHARLIE'S

YOUR LOCAL FAMILY BUTCHER

20 Church Road, Chinnor

Open: 8am – 4.30pm Tuesday – Friday  
8am – 1pm Saturday



01844 353432

ALL FRESH MEAT – LOCALLY SOURCED

## PLECK WOOD

The Footpaths and Amenities Group of the Parish Council have recognised that there is scope for improving Pleck Wood. The aim is to better manage the area for wildlife whilst also recognising that the Wood is used as a play area by children. The major work that will be carried out over the winter will be to coppice around one third of the hazel trees that were planted in the year 2000 when the wood was extended. The intention is to coppice the hazels on a rolling basis over a number of years so that there is a mix of newly coppiced trees along with areas with one or two years' growth.

Coppicing has been practised throughout history to provide a regular supply of wood for a variety of uses. In the past, coppiced woodland would provide wood for manufacturing charcoal, small timber for building houses and carts, and to provide bark for use in tanning leather. Hazel trees were coppiced to provide stakes and shoots for wattle fencing.

Coppicing has a number of benefits for wildlife, primarily those species favouring open woodland. After coppicing more light reaches the woodland floor and allows plants such as bluebells, primroses and anemones to become established. Coppiced woods are also favoured by nightingales and fritillary butterflies. Several small stacks of the cut wood will be placed around the wood to encourage beetles and other invertebrates to take up residence. The smaller stems from the cut wood will be made available to parishioners for use as stakes in gardens and on allotments.

We have already been planting daffodils in the wood and the intention is to plant other flowering species throughout the wood. Longer term, we will be contacting organisations such as the Woodland Trust to discuss other improvements that can be made. Further updates will be given in these Notes.

**Peter Tinson**

## ADVERTISING IN THE PARISH NOTES

The Parish Notes are an excellent and affordable way to advertise locally. They are published every two months and delivered to every household in the area. Please email Julian Knight if you are interested in advertising: [jknight652@aol.com](mailto:jknight652@aol.com)

1/4 page – £12 for one issue or six issues for £50

1/2 page – £17 for one issue or six issues for £70

Full page – £32 for one issue or six issues for £130

If you have anything you'd like to see in the next issue please get in touch.

**Copy deadline for the February/March issue is 15th January.**

Email: [sallyparishnotes@gmail.com](mailto:sallyparishnotes@gmail.com)